


RETRACTABLE PATIO AWNINGS

SIMPLE SHADE SERIES





We all love beautiful sunny days. A time to be home enjoying family and friends. As we venture out onto our decks and patios, we realize the hot sun and UV rays can make our outdoor spaces uncomfortable.

SIMPLE • RELIABLE • AFFORDABLE

SummerSpace® Awnings will transform your sunny space into a relaxing shaded oasis. Join the thousands of families who have taken this journey with us. Over the next few pages, you can explore all the possibilities in outdoor comfort! You work hard, and you deserve the home of your dreams.

Let us make your dreams a reality.

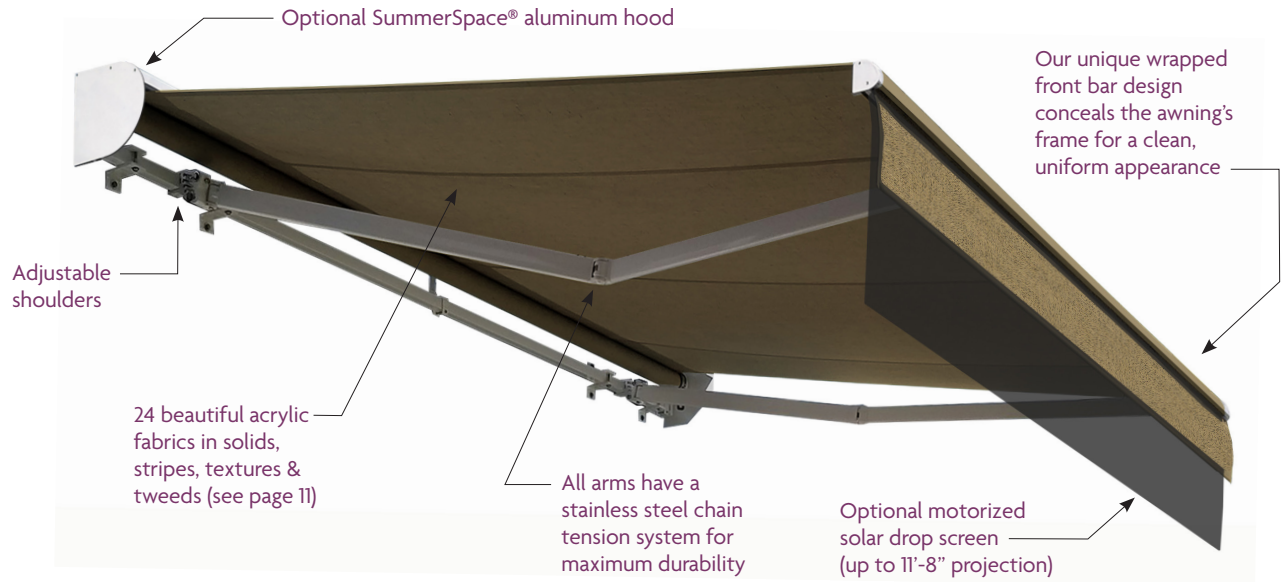
SUMMERSPACE® SIMPLE SHADE

- 3 awnings: Traditional, Semi-Cassette and Full Cassette styles
- Standard sizes up to 20' widths
- Projections from 10'-2" to 13'-2"
- 24 fabric selections
- 5 powder coated frame colors (see below)
- 10 year frame & fabric warranty
- 7 year awning motor warranty
- Optional drop screen front bar
- Simple • Reliable • Affordable



Choose from five low gloss textured frame colors. Our durable SummerShield powder coated finish includes UV inhibitors for a beautiful fade resistant finish with anti-microbial technology.

TRADITIONAL



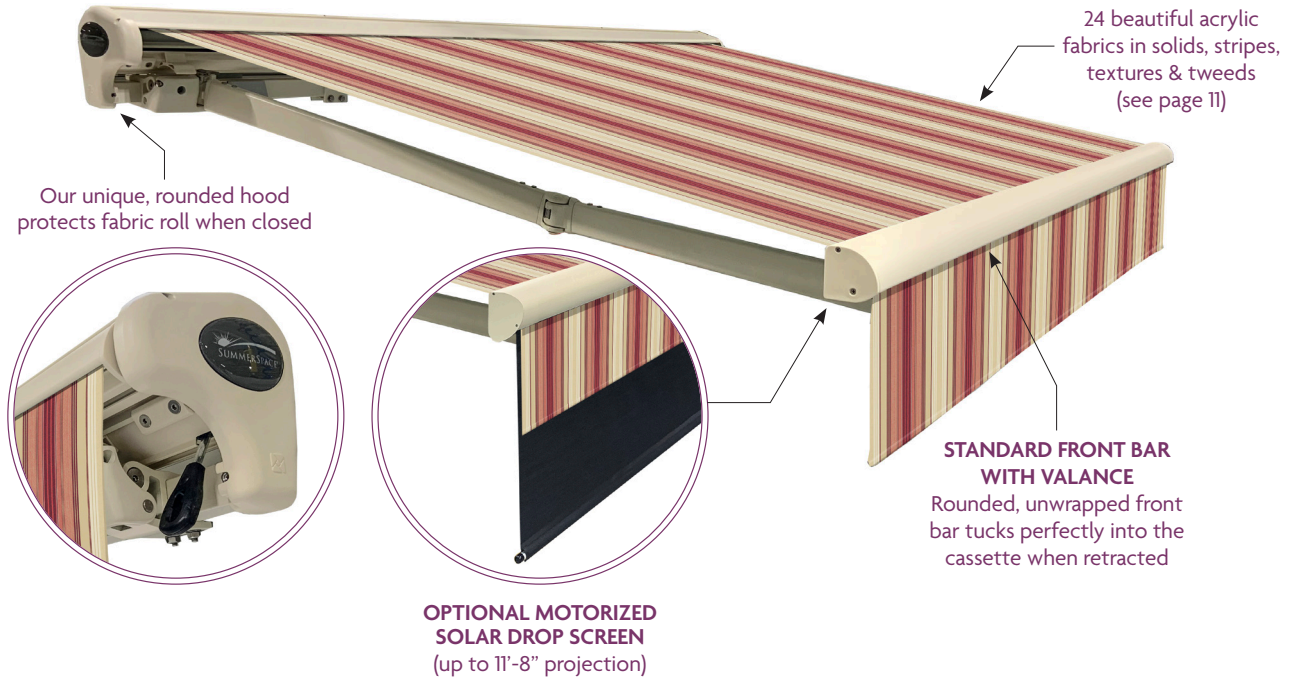
THE SUMMERSPACE® SIMPLE SHADE SERIES TRADITIONAL RETRACTABLE AWNING is designed for maximum shade protection with the simple touch of a button. Sun when you want it, and shade when you need it, is exactly what you and your family will have with this reliable, time-tested awning. The nearly maintenance free construction requires only an occasional hosing down to keep the dust and dirt from building up. The rest of the time is for rest, relaxation and enjoyment. The strong yet simple design with a ten year frame and fabric warranty keeps this awning affordable, making it a very sound investment that will last for years. Available in projections up to 13'-2", this awning has the greatest projection available in its class. Customize with one of the five powder coated frame colors and 24 beautiful fabric choices for the perfect look to blend with your home's exterior.





Simple Shade Traditional Awnings by SummerSpace® are designed to be self-supporting for an unobstructed view without poles or supports. These awnings provide the perfect amount of shade when open, and retracts to blend seamlessly with your home's exterior when closed.

SEMI-CASSETTE



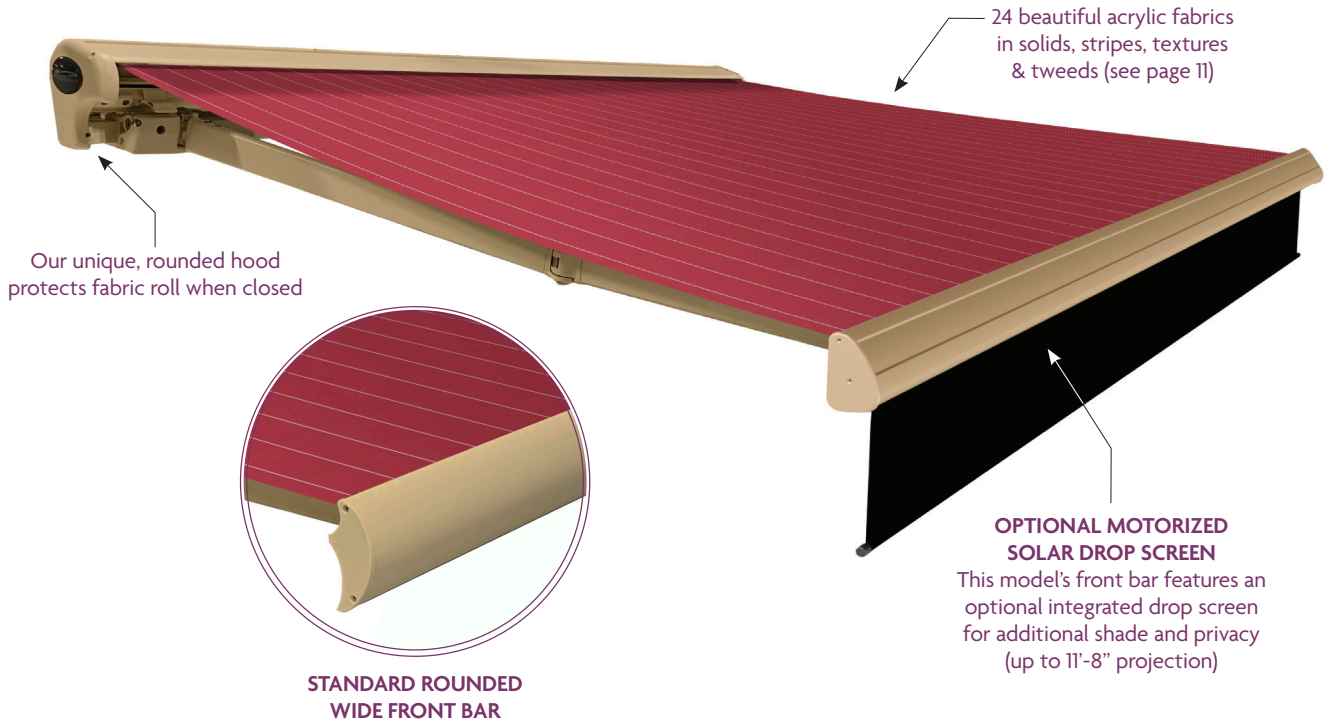
THE SUMMERSPACE[®] SIMPLE SHADE SERIES SEMI-CASSETTE RETRACTABLE AWNING is constructed using the same frame and fabrics as our Traditional Retractable Awning with the added benefit of a fully enclosed fabric cassette housing. This is designed to keep your fabric protected at all times when not in use. This awning is also the perfect choice when roof mount applications are required to meet proper mounting heights. The low-profile contemporary design with a straight valance, along with our low gloss frames, let's everyone know that you have purchased the best awning on the market. Increase your shade and privacy with a beautiful SummerSpace exclusive battery powered, remote controlled solar drop screen. This option provides additional sun control later in the day as the sun becomes lower in the sky. Let's get started. Our quick turnaround times will have you in the shade in no time!





Semi-cassette Awnings by SummerSpace® are self-contained with a built in hood which covers the entire fabric roll when retracted. Its modern design gives added style to the awning. This awning will be an exquisite accent to any home's exterior and a perfect solution for roof mount installation.

FULL CASSETTE



THE SUMMERSPACE[®] SIMPLE SHADE FULL CASSETTE RETRACTABLE AWNING features the same rounded hood as our semi-cassette model to offer complete coverage of the fabric roll when retracted. Additionally, the oversized front bar protects and hides the arms and shoulders when retracted. This awning is truly revolutionary in style and performance.





Full Cassette Awnings by SummerSpace® offer the highest level of protection for your beautiful awning fabric. They are designed to completely cover the fabric roll when closed, ensuring your fabric retains its color and strength and beauty for many years.

FEATURES & OPTIONS



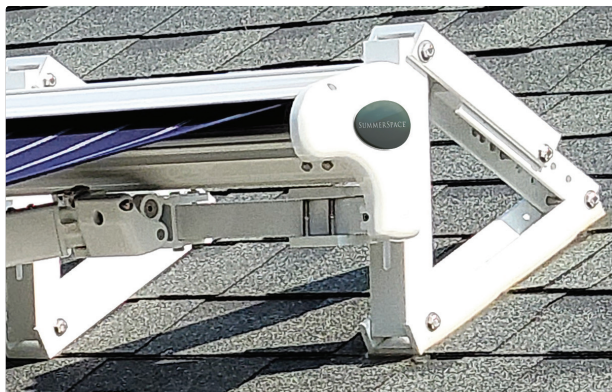
WIND SENSOR

The SummerSpace® Wind/Motion Sensor provides wind protection, retracting the awning when winds exceed a safe speed. Awning must be motorized.



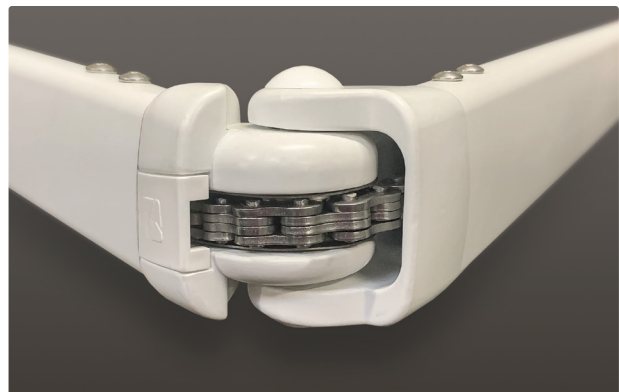
SUMMERSPACE® ALUMINUM HOOD

Protect your fabric from the elements with an optional aluminum hood.



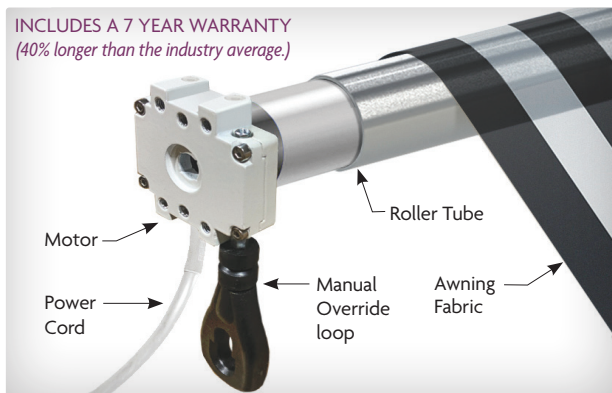
ROOF MOUNT

Your awning may be roof mounted when space requirements cannot be met.



CHAIN TENSION SYSTEM

All arms have a stainless steel chain tension system for maximum strength, durability, and reliability.



INCLUDES A 7 YEAR WARRANTY
(40% longer than the industry average.)

MOTOR & REMOTE CONTROL

Operate your awning with a quiet, hidden, SummerSpace® tubular motor with an all weather remote control. The manual override loop allows you to retract your awning in the event of a power outage. Simply plug the cord into an outside receptacle – no electrician is needed.



DROP SCREEN

Motorized retractable solar drop screens are available on projections up to 11'-8", providing over 4' of vertical shade. Solar mesh color is Ebony and provides up to 90% sun block. Battery operated motor with no cords. Includes 3 year warranty.

SIMPLE SHADE FABRIC COLLECTION

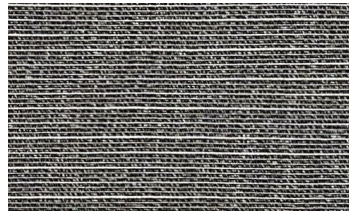
COLORS SHOWN MAY VARY FROM ACTUAL MATERIALS. ALL COLORS AND PATTERNS ARE SUBJECT TO CHANGE WITHOUT NOTICE. PLEASE CONFIRM AT TIME OF ORDER.



Sand Dune # LW59



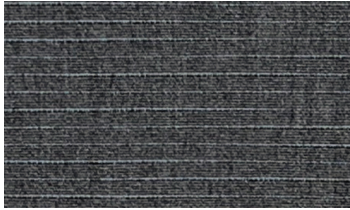
Toasted Sesame # LW60



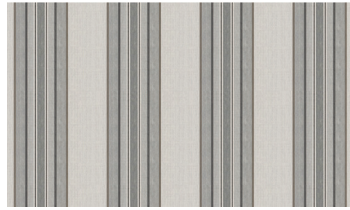
Cobble Stone # LW61



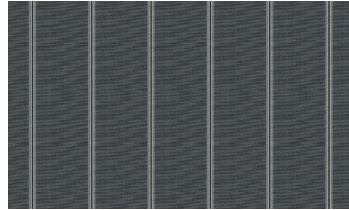
Brushed Silver # LW62



Simply Charcoal # LW97



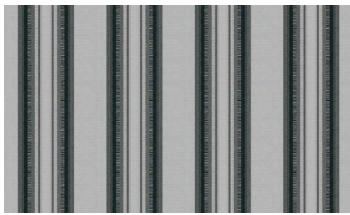
Steel Grey # T534879



Stockholm # T108124



Denim/Almond # T95192



Tuxedo # T95024



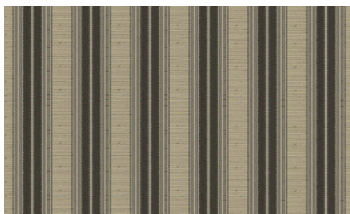
Brown Cream # T5349106



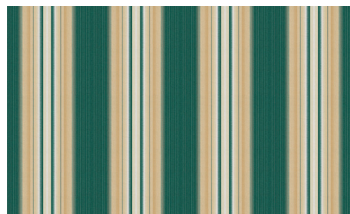
Cafe Au Lait # T94597



Crème Latte # T5349930



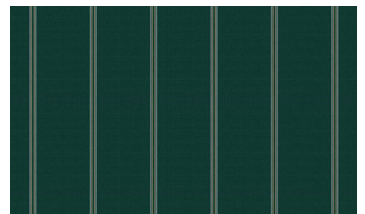
Chocolate Almond # T94991



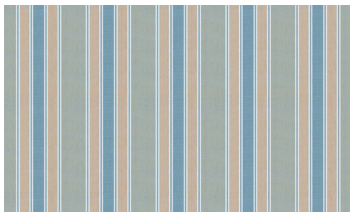
Forest/Beige/Cream # T6365



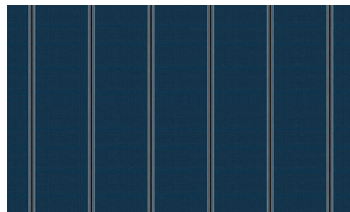
Meadow White # T534762



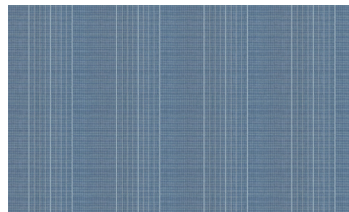
Lund # T1081305



Winter Sky # T94821



Oslo # T1081392



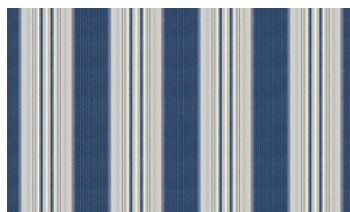
Rebel Sapphire # T539687



Navy/Beige # T64110



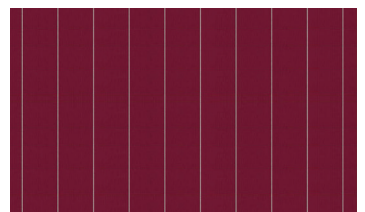
Chambray # T51672



Navy/Grey Rib # T63610



Burgundy/Natural # T501111



Norway # T79273

WE'RE ALL ABOUT COMFORT

Add fashion and function to your backyard with a beautiful Retractable Awning by SummerSpace®. The shade an awning provides can reduce the temperature on your deck or patio by up to 20 degrees. A SummerSpace® Awning will add equity to your home and provide years of lasting performance and enjoyment.

SIMPLE • RELIABLE • AFFORDABLE

