

2023

SUMMERSPACE.COM

POOL  
PATIO &  
SPA  
COLLECTION

LEISURE ROOMS





# *the* ALL-SEASON LEISURE ROOM

The All-Season Leisure Room from SummerSpace® is designed to meet your individual relaxation needs throughout the entire year. The versatility of these rooms gives you complete control for comfortable, beautiful, and functional resort style living in your own backyard.





ROOF: TEMPOTEST DRIFTWOOD #T926  
FRAME: ALMOND TEXTURED #SS1013





**All-Season Leisure Rooms by SummerSpace®**

are built with tempered glass and screen panels which are carefully crafted to be as functional, durable, compact and strong as possible. We've engineered significant performance into a slender panel design for a weather resistant room that will endure for years. Our extra wide sliding door makes moving furniture in and out simple and convenient. Standard with fixed glass base panels.

---

*Our panels are designed to be versatile depending upon your needs. The sliding glass windows can be opened to control your environment, or removed seasonally if you prefer just screens in the summer.*

---

**ALL-SEASON LEISURE ROOM  
OPTIONS:**

*8 Textured, powder coated frame colors* **PAGE 14**

*Over 200 Tempotest® fabric selections*

*2 Optional panel base choices: Sliding glass windows with FlexScreen® panels or powder coated aluminum panels*

*Fan & light mounting kit* **PAGE 17**

*Flame retardant coating for roof fabric*

*Extended height panel optional for more space*



ROOF: TEMPOTEST LIME #T16  
FRAME: ALMOND TEXTURED #SS1013









ROOF: TEMPOTEST DRIFTWOOD #T926  
FRAME: ALMOND TEXTURED #SS1013





*make it a*  
**SCREEN ROOM**

---

The Screen Room by SummerSpace® is the perfect retreat from heat and insects without the sliding glass windows. This space is perfect for dining, lounging or game night with your family. These rooms are designed to be up all year round with no need for put up and take down including the tension roof fabric system.







ROOF: TEMPOTEST CHAMBRAY #T51672  
FRAME: NAVY BLUE TEXTURED #SS5011



**Screen Rooms by SummerSpace®** are built with our durable aluminum frame using superior quality FlexScreen to create a space that's insect free with a hint of privacy. We've engineered significant performance into a slender panel design for a comfort space that will endure for years. Standard with fixed FlexScreen® base panels.

### SCREEN ROOM OPTIONS:

*8 Textured, powder coated frame colors* **PAGE 14**

*Over 200 Tempotest® fabric selections*

*3 Panel base choices: Powder coated aluminum panels, sliding glass windows with FlexScreen® panels or fixed glass panels*

*Fan & light mounting kit* **PAGE 17**

*Flame retardant coating for roof fabric*

*Extended height panel optional for more space*

*Easily upgrades to an All-Season Room with the addition of sliding tempered glass panes*

---

***At SummerSpace®, we use only the highest-grade materials on the market, and our screen material is no exception! Our long-lasting, vinyl coated polyester screening has the perfect openness to allow the breeze to come in while keeping insects out.***

---





*make it a*  
**SPA ROOM**

BRRR... it's cold outside! But, that doesn't matter when you have your own Spa Room by SummerSpace®. Escape the winter doldrums as you soak in a soothing hot tub that's waiting right outside your door. It's the ultimate way to pamper yourself and entertain friends.



ROOF: TEMPOTEST BRUSHED SILVER #LW62  
FRAME: ESPRESSO TEXTURED #SS8022

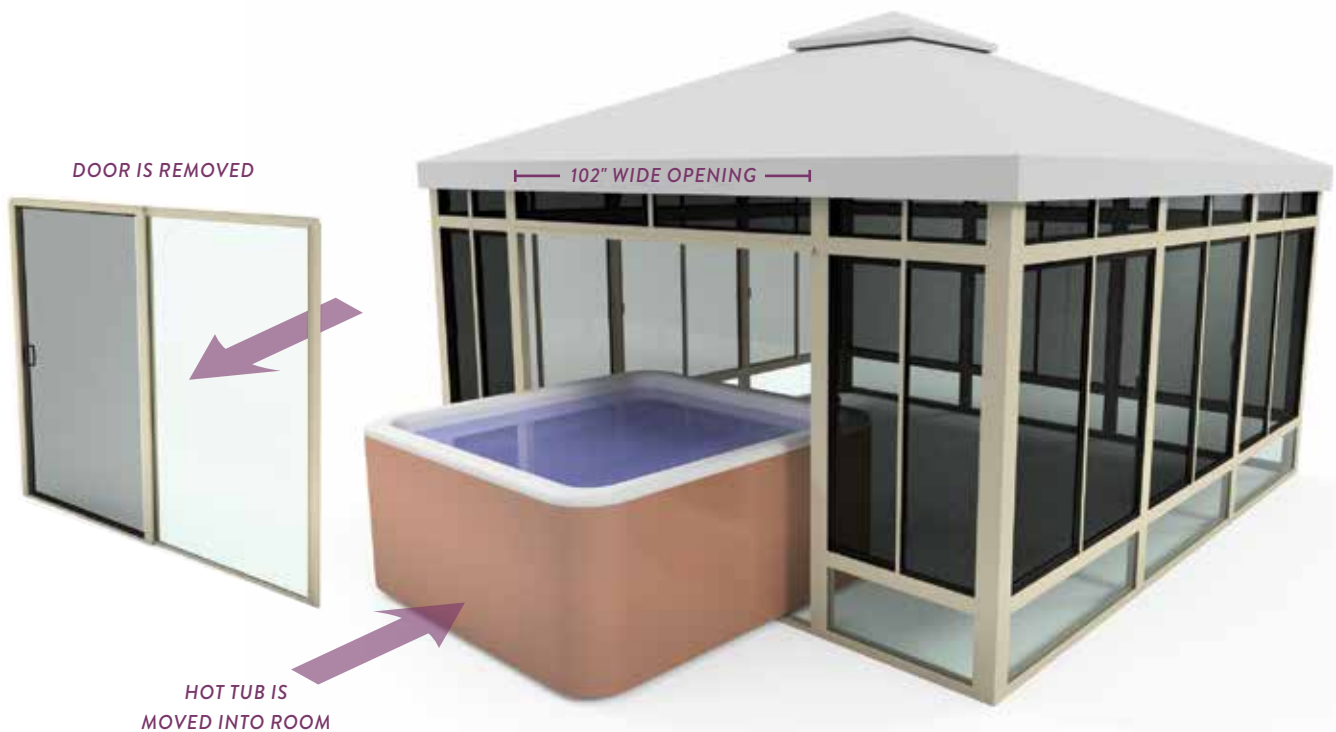




**Spa Rooms by SummerSpace®** are designed with one feature that makes our product unique: Our Removable Spa Accessible Door. All square and rectangular Leisure/Spa Rooms have a removable nine-foot wide 2-panel door (102" net opening) to accommodate the seamless installation of a hot tub. This door opens for normal access with an oversize opening of 47". Our tension roof system is designed to hold snow so you can enjoy your spa all year round. Our extended height room also provides upper venting while keeping the main windows closed for all-weather protection from the elements. Standard with fixed glass base panels.

***Our 9' Removable Spa Accessible Door makes installation of your hot tub a breeze!***

***THE LEISURE ROOM'S 9' WIDE DOOR PANEL IS TEMPORARILY REMOVED FOR CONVENIENT HOT TUB INSTALLATION.***



*This 9' Spa Accessible Door comes standard for square and rectangular rooms only. It is not available on octagonal rooms.*



A woman with dark hair is seen from behind, relaxing in a white hot tub. The hot tub is situated on a wooden deck under a striped canopy. Large windows behind the hot tub offer a view of a beach at sunset, with waves crashing on the shore and a large, colorful cloud in the sky. The scene is peaceful and scenic.

## SPA ROOM OPTIONS:

8 Textured, powder coated frame colors [PAGE 14](#)

Over 200 Tempotest® fabric selections

2 Optional panel base choices: Sliding glass windows with FlexScreen® panels or powder coated aluminum panels

Fan & light mounting kit [PAGE 17](#)

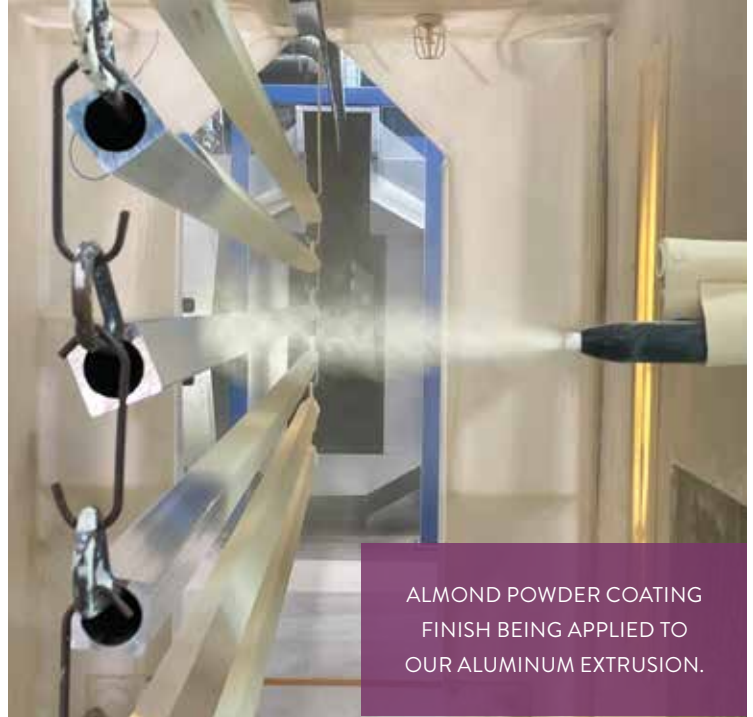
Flame retardant coating for roof fabric

Extended height panel optional for more space



## SUMMERSHIELD™

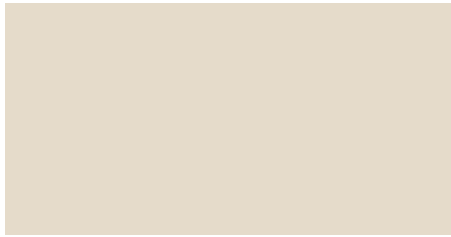
All powder coatings and applications are not created equal. Our industry leading pretreatment, and proprietary SummerShield powder coating finish, exceeds AAMA 2604 specifications including 3,000 hour salt spray testing. This super durable finish includes UV inhibitors that extend the life of the beautiful, fade resistant finish. Choose from eight low gloss, lightly textured finishes. SummerShield takes it one step further by infusing our coatings with anti-microbial technology for the ultimate in low maintenance finishes.



ALMOND POWDER COATING FINISH BEING APPLIED TO OUR ALUMINUM EXTRUSION.

### Signature Colors

THESE 6 COLORS ARE STANDARD AND ARE INCLUDED IN THE PRICE.



**SS1013** Almond Textured



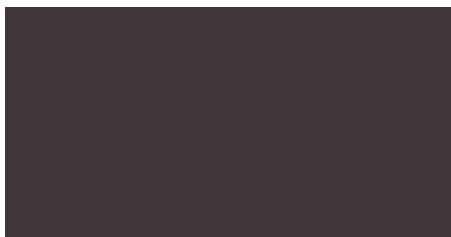
**SS9016** White Textured



**SS1019** Sand Textured



**SS7043** Mineral Gray Textured



**SS8022** Espresso Textured

*We coat our own frame parts and extrusions in our 31,000 s.f. SummerSpace® powder coating facility. Our 313-foot continuous powder coat line allows us to wash, powder coat and heat-dry all parts to a perfect finish in under 2 hours!*

### Signature *Plus* Colors



**SS3005** Burgundy Textured



**SS5011** Navy Blue Textured



**SS6005** Forest Green Textured

*Color swatches shown here may vary from actual materials. Contact your SummerSpace® dealer for powder coat swatch samples.*



# ANATOMY OF A PANEL



SCREEN BASE OPTIONS ARE ALSO AVAILABLE.



**1**  
**TOP VENT SLIDERS**  
Optional top vent tempered glass slider windows allow you to control room air ventilation.



**2**  
**SLENDER DESIGN**  
Durable components allow for a thin overall panel depth of 2½".



**3**  
**CUSTOM CONTROL**  
The handles on our window panes slide up and down effortlessly for personalized functionality.



**4**  
**INSECT CONTROL**  
Our panels are made with an incredibly durable mesh screen to keep insects out of your space while adding a hint of privacy.

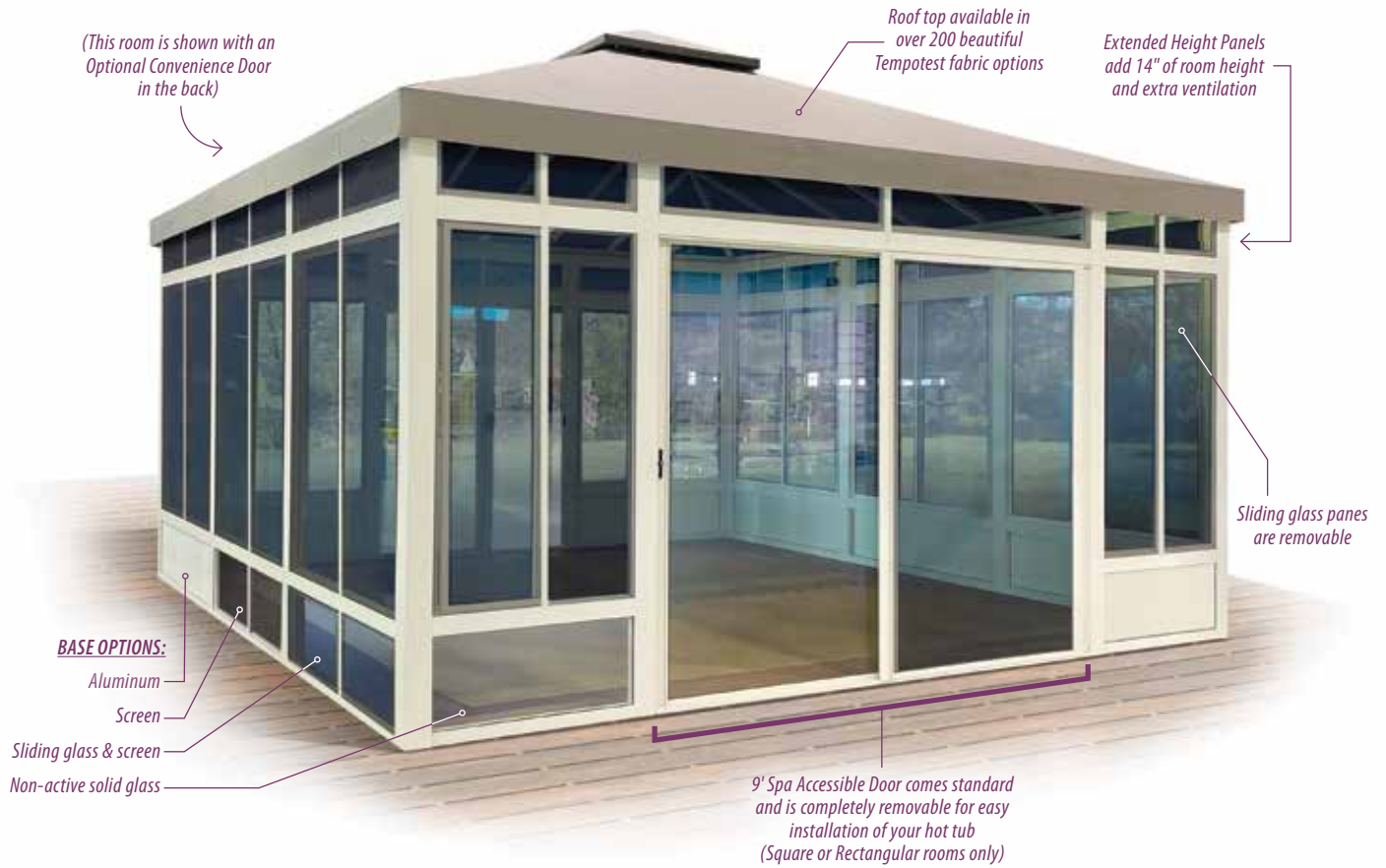


**5**  
**TEMPERED SAFETY GLASS**  
Our i89 Low-E Tempered Safety Glass is high performance with clear appearance & high light transmission.



# THE SUMMERSPACE® LEISURE ROOM

*- Make it your own! -*



✓  
Our beautiful accessory structures are easy to assemble and easy to move. They are designed to be non-habitable.



ROOM SHAPE AND SIZE		SQUARE		RECTANGULAR	OCTAGONAL	
		LARGE: 16' x 16'	SMALL: 12' x 12'	12' x 16'	LARGE: 15'	SMALL: 13'
Room Square Footage		255	146	193	175	139
Approx. Overall Room Height	w/Extended Panels	11'-11"	11'-1"	11'-1"	11'-7"	11'-3"
	w/Standard Panels	10'-9"	9'-11"	9'-11"	10'-5"	10'-1"
Deck or Pad Size Required		16'-0" x 16'-0"	12'-1" x 12'-1"	12'-1" x 16'-0"	14'-7" Oct.	13'-0" Oct.
Standard Door Width		9' Removable Spa Door	9' Removable Spa Door	9' Removable Spa Door	70"	62"
Approx. Weight (lbs)		1,596 – 1,928	1,180 – 1,425	1,404 – 1,693	1,171 – 1,418	1,062 – 1,286



## FEATURES & OPTIONS



**Vector Vent Roof Systems:** Our roofs are constructed with a cupola for air ventilation. These roof systems are made from durable aluminum and include a screen insert to help keep insects out of your room.

**Ceiling Fan & Lighting Fixture Bracket Kit:** We make it easy to add lighting and comfort with our fixture bracket. This kit allows you to easily and securely install a ceiling fan or center light while keeping wires concealed from view.



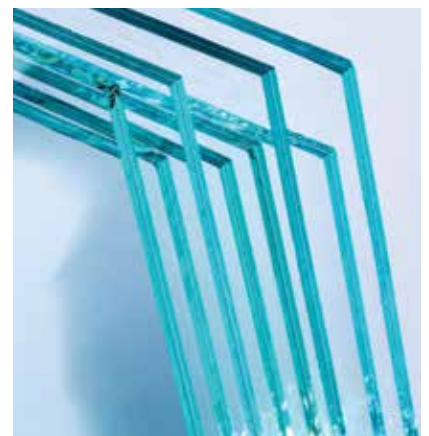
**Easy Roof Tensioning System:** Our “fast straps” make it easy to keep the fabric roof system taut as a drum without special tools or techniques.

**Top Vent Slider Windows:** In addition to our Vector Vent Roof, our top sliders offer another way to expel excess heat while generating good airflow. Positioned at the top of every panel (with extended height option), you will have total control of the breeze.



**Durable Mesh Screen:** SummerSpace® rooms are made with an incredibly durable mesh screen material to keep insects outside of your space while adding a hint of privacy.

**Tempered Low-E Glass:** Our *i89 Low-E Tempered Glass* is a high performance glass that is clear in appearance with high light transmission. Low-emissivity glass provides natural light transmission while helping to limit heat gain and thermal energy transfer.





SummerSpace® Exclusive



# LINEN WEAVE

COLLECTION

Our five Linen Weave roof fabrics are crafted exclusively for SummerSpace® by Tempotest®. Their rich, earth-toned colors combined with crisp woven texture give an organic flair that's both casual and sophisticated. Teflon protected for lasting performance, these fabrics come with a 10 Year Warranty. Scan the QR code below to view our complete collection of Tempotest roof fabrics.



Scan this QR code to view  
our other 200 fabric choices!  
*Striped fabrics carry a surcharge.*



LINEN WEAVE:  
COBBLE STONE #LW61  
*shown with white frame*





SAND DUNE  
#LW59



TOASTED SESAME  
#LW60



COBBLESTONE  
#LW61



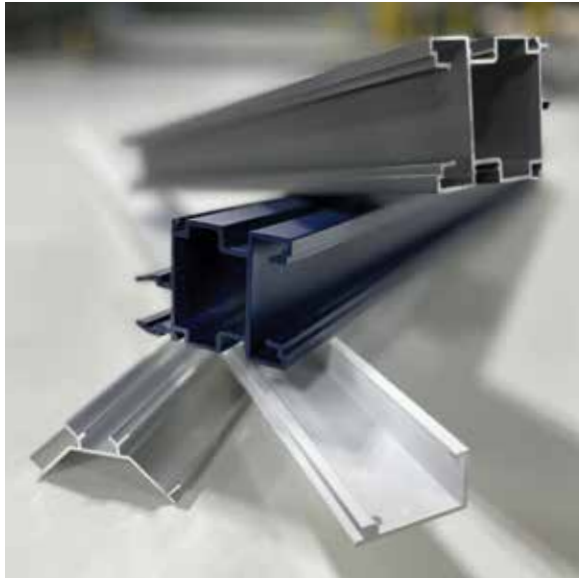
BRUSHED SILVER  
#LW62



SIMPLY CHARCOAL  
#LW97







## EXTRUDED ALUMINUM

Aluminum extrusion is a process used to transform aluminum alloy into shapes with a definitive cross-sectional profile for a wide range of uses. Aluminum is durable, versatile, stable and strong, making it a perfect component for use in commercial/industrial architecture. Aluminum is uniform in quality when extruded and will never rust. It is affordable, corrosion-resistant, low maintenance, and recyclable. It is one of the many aspects of SummerSpace® that assures your outdoor comfort structure will maintain its beauty and functionality for many years.



## TOUCH-UP PAINT

SummerSpace makes it easy to keep the frames of your room looking beautiful and new! Should you get scuffs or scratches, our matching touch-up paint has you covered for a seamless correction!



**Available in  
all frame colors!**

*We recommend one bottle or pen  
of touch-up paint per room.*

Made to  
From frame to roof, SummerSpace Leisure Rooms





## EASY TO REMOVE SASHES

For the days when the air is warm and the breeze is refreshing, you may prefer to transform your Leisure Room into a screen room. SummerSpace window sashes are easy to remove and reinsert with minimal effort, allowing you to customize your comfort as the weather changes. Remove your sashes in 3 easy steps:

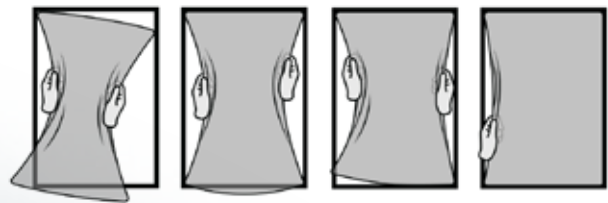
- 1: Slide your window sash open slightly.**
- 2: Holding the sash with both hands, lift it upward.**
- 3: Slide the sash outward from the bottom end and remove from the frame.**

To reinsert, slide the sash into the top of the frame and lift upward; gently guide the sash downward into the groove and allow it to slide down into place.



## FLEXSCREEN®

SummerSpace® Leisure Rooms are made exclusively with FlexScreen®. Created using flexible spring steel coated in exterior-grade PVC, the FlexScreen frame is nearly indestructible, scratch-resistant, and impervious to weather extremes. Held firmly in place by tension, the frame disappears into the screen pocket for an unobstructed view. FlexScreen installs and removes in seconds for easy cleaning. We're proud to offer this premium, hassle-free product in our SummerSpace® Leisure Rooms!



endure.  
are built for years of beauty and functionality.









ROOF: TEMPOTEST BRUSHED SILVER #LW62  
FRAME: ESPRESSO TEXTURED #SS8022





SUMMERSPACE® DEALER:



SS2023.PPS.LeisureRooms  
Rev 2

